



«La Baillargelle» is an itinerary for both those who live in and who are visiting Saint-Georges-les-Baillargeaux. Along its roads and byways, everyone will discover something of their own history.

The Information Points

The tour will take you to twenty-one different sites, numbered on the plan opposite. Each site has an Information Point, an illustrated plaque with details about the original history of the place.

On foot, by bicycle or by car

From the departure point, the church square, you have a choice of two itineraries. The shorter concentrates on the town itself, and may be done on foot or by bike (allow about an hour and a half). The longer may be done by bike or by car, and you will need to allow half a day to do it all. The nickname *la petite reine* for the bicycle is well merited for La Baillargelle, where it is indeed the little queen. You can hire one in the café in the church square.

For group meal reservation, bicycle hire, accommodation, contact the town hall on 05 49 52 81 02

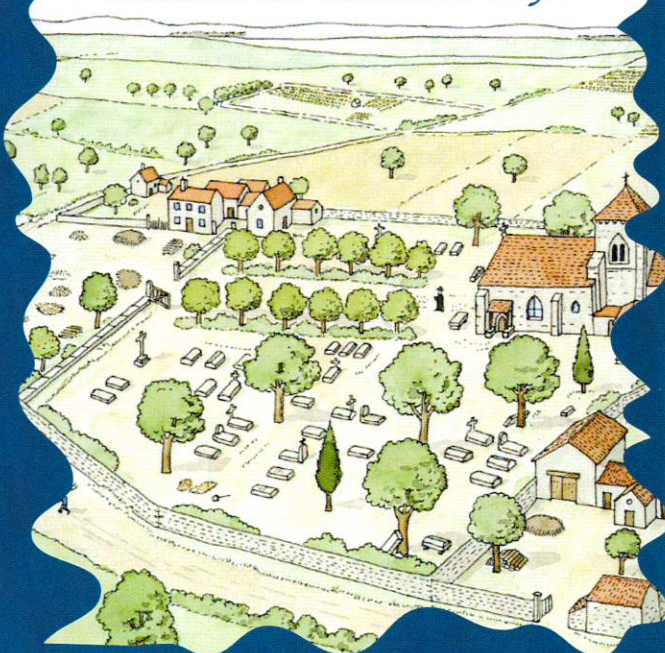
AT SAINT-GEORGES LES BAILLARGEAUX



Discover Saint-Georges-les-Baillargeaux, on foot, by bicycle or by car



Free of charge. Signposted.
Suitable for all the family.



Free tours with commentaries in English.

On the other side of this document you will find an amusing and informative questionnaire. There is a question for you to read between each stop.

From one church to the other

From the medieval church to
episodes from the Revolution

Water stories

The grape harvest ëbaní

The town hall

From the presbytery to
the post office

The tithe barn

La Roche aux Oies

Here is the plan of the itinerary. The numbers are those of the Information Points along the way. The departure point is in the church square.

21 History of the church square

20
From the
Roman way to the
Chateau de Vayres

The village school

17
Le Peu

The water tower

19
Baillargix

The legends of St-Georges

13
Champ-de-Gain

12 The sand quarries

Plan de la promenade découverte

Allow about and three hours for the entire tour (20 km).

La Ballargelle (itinerary for bicycle or on foot. Short tour in the town (about 1 hour.)

■■■■■ "La Baillargelle" itinerary suitable for bicycle or car

P Car-park

The Hospice

From the fairground
to the football pitch

The dolmen

"La Baillargelle" consists of two tours, one shorter, one longer. The former concentrates on the town itself, and may be done on foot or by bicycle. The second extends the first and can be done by bicycle or by car.

The signposts enable you to distinguish between the sections to be done on foot and those to be done by car. Only the bicycle may go everywhere - take to your handlebars!

ONE QUESTION PER INFORMATION POINT, CHOOSE FROM THREE ANSWERS

Do you know?

1 FROM ONE CHURCH TO THE OTHER

Question - What does the local expression « la Maldansée » mean ?

- ☐ A difficult dance which originated in St-Georges
- ☐ A young lady not gifted in dancing
- ☐ A devilish legend.



2 FROM THE MEDIEVAL CHURCH TO EPISODES FROM THE REVOLUTION

Question - What is a "temple of reason"?

- ☐ A place where the mentally ill may be cared for
- ☐ A church requisitioned under the Revolution
- ☐ A Roman basilica.



3 WATER STORIES

Question - What did the inhabitants do to celebrate the arrival of the first water-pump in the village of Le Peu?

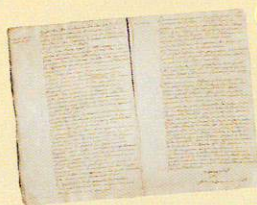
- ☐ They dressed the pump up as a little man
- ☐ They painted the pump on the facade of their houses
- ☐ They composed a song with the refrain « Little pump (borne), you would have arrived earlier if you had been less stubborn (bornée)! »



4 THE GRAPE HARVEST "BAN"

Question - What is the grape harvest "ban" ?

- ☐ A bench ("ban" in old French) for the picker to rest on
- ☐ The proclamation officially displayed about the harvesting timetable
- ☐ Public applause at the end of a good harvest.



5 THE TOWN HALL

Question - In which year did public education become free and compulsory ?

- ☐ In 1794 when Robespierre was in charge of the National Convention
- ☐ In 1833, under the July Monarchy, when the minister, Guizot, passed a law establishing primary education
- ☐ In 1882, when Jules Ferry, at the time public education minister, had new school legislation adopted.



6 FROM THE PRESBYTERY TO THE POST OFFICE

Question - Why were the clergy's goods confiscated for the nation ?

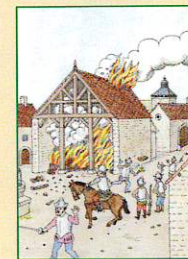
- ☐ To punish them for their support of the monarchy
- ☐ To raise an army to fight the enemies of the Revolution
- ☐ To meet the deficit in the state's finances.



7 THE TITHE BARN

Question - What is the tithe?

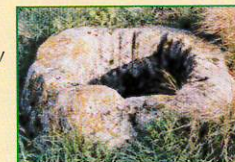
- ☐ A royal tax paid in kind
- ☐ The tax paid to the lord of the manor, on the first Sunday of September
- ☐ A tax collected by the clergy relating to harvests.



8 LA ROCHE AUX OIES

Question - What is a megalith?

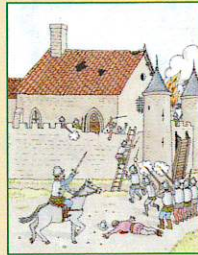
- ☐ A monument of coarsely hewn stone or one otherwise roughly assembled
- ☐ A limestone plateau on which geese rest during their migration
- ☐ An enormous stone thrown out by a volcanic eruption.



9 THE HOSPICE

Question - Why did the Chauvigny soldiers attack the hospice's fortress?

- ☐ To fight against the League
- ☐ To fight against the King
- ☐ To fight against the Protestants.



10 FROM THE FAIRGROUND TO THE FOOTBALL PITCH

Question - What is a "beutchon"?

- ☐ A wind instrument in St-Georges' brass band
- ☐ Patois for roe deer
- ☐ Patois for a young rascal.



11 THE DOLMEN

Question - What is totemism ?

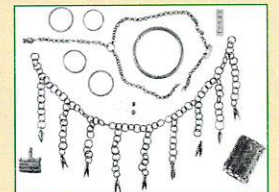
- ☐ An illness contracted by Indians obsessed with their totem
- ☐ A form of animal and plant worship, the ancestors of mankind
- ☐ The art of making masks.



12 THE SAND QUARRIES

Question - Who was the Dame de Millas?

- ☐ A generous donor from Millas in the Eastern Pyrenees, who settled in St-Georges in the 1930s
- ☐ A local figure at the beginning of the 20th century, a rather plump lady who was very fond of a type of cake made from boiled cornflour
- ☐ A princess from the first iron age, who lay in the sand of St-Georges for more than 2,500 years.



OVER TO YOU!

CAMP-DE-GAIN

Question - What is a mission cross?

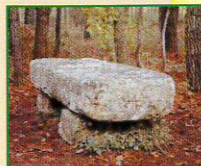
A cross erected at the end of an evangelising mission
 'travel cross' carried by missionary priests into distant countries
 An important crossroads on the route to St James of Compostela.



THE LEGENDS OF ST-GEORGES

Question - what is the "cheval-Malet" ?

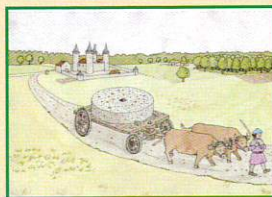
The lame horse belonging to a fellow called Malet, one time waggoner at St-Georges
 A legendary horse from Poitou who carried off and killed its riders
 A breed of horse originally from Malaysia, a small Malay horse transformed into 'Malet' by local patois.



ARGES

Question - What is the "quintaine" ?

A card game, a forerunner of poker, in which the major combination is the quint, a sequence of five cards following each other
 A traditional dance with a five-beat rhythm
 A game played by cavaliers in the Middle Ages using a lance to target a post or a moving dummy.



THE VILLAGE SCHOOL

Question - what is a "refuge" for toddlers?

A hospital for children.
 A children's nursery open during teaching hours and so-named and the beginning of the 20th century
 A family guest house enabling parents to go away for a few days.



17 LE PEU

Question - What is the "rouget du porc" ?

- ☐ A local song, a pastiche of the Marseillaise, with music and words by Claude Rouget de Lisle
- ☐ A piece of fillet of pork with characteristically red flesh
- ☐ An infectious illness which decimated the pig population in the 19th century.



18 THE WATER TOWER

Question - What is a washerwoman's box ?

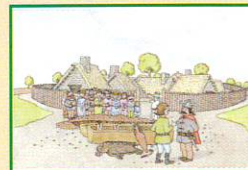
- ☐ A little box in which she could keep her soaps and her scrubbing brush
- ☐ A wooden box with no cover, on which the washerwoman knelt at the side of the washplace
- ☐ A little box in which the washerwoman put the money she was paid when she had finished her work.



19 BAILLARGIX

What was the Gaulsi bed like?

- ☐ It was a long earthen bench for sitting and sleeping on
- ☐ It was a hammock made out of wild boar skin.
- ☐ It was not fresh, like the fish in Asterix !



20 FROM THE ROMAN WAY TO THE CHATEAU DE VAYRES

Question - Of the following, who probably stayed at Vayres?

- ☐ Joan of Arc
- ☐ Louis XIV
- ☐ George Sand.



21 HISTORY OF THE CHURCH SQUARE

Question - what is a "limon"?

- ☐ A word of Latin origin for sedimentary rock
- ☐ A word of Arab origin for a variety of lemon
- ☐ A word of Gallic origin meaning the shaft of a handcart.

